

hub inc.
MARION & POLK EARLY LEARNING HUB



Executive Director Report Initiative Progress

July 7, 2016

 (503) 967.1185

 info@earlylearninghub.org

 2995 Ryan Drive SE, Suite 200 Salem, OR 97301

Mission

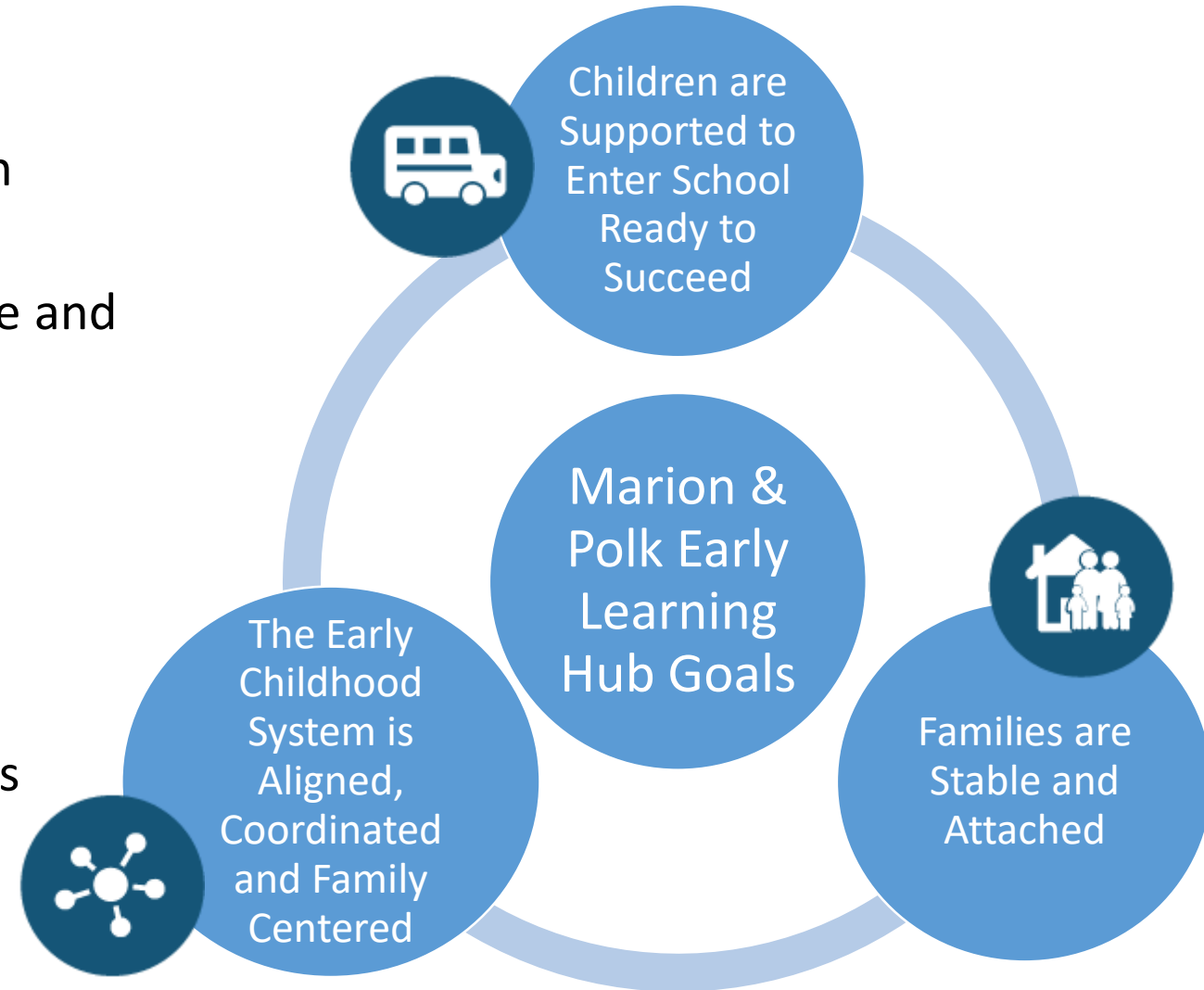
- To convene, collaborate and catalyze action in our hub region to better align services and resources for children and families

Vision

- Every child is safe, healthy and prepared to learn
- Every family is strong and resilient
- Every learning services are coordinated, effective and efficient

Values


- Unified focus on kids and families
- Actions are strategic and coordinated
- Data driven
- Accountable for results and stewardship of funds
- Value equity and diversity
- Strengthen Family Resilience



Kindergarten Partnership & Innovation

- Pre-K through early elementary integrated professional learning
- Community engagement
- Parent Education






Funds Support	Success Measure	Action Highlights	Outcomes	Next Steps
<ul style="list-style-type: none"> ▪ KPI Coordinators (total of 3 FTE) ▪ KPI activities in 31 locations 	 <p>Increase in kindergarten assessment scores in each domain by demographic group</p>	<ul style="list-style-type: none"> ▪ Expanded to 31 catchment areas ▪ Many Marion County sites included series-based parent education (OPEC funded) ▪ Coordination with early kindergarten registration; Polk County did kinder registration across all districts on April 20 ▪ 11 Ready for K sites ▪ 304 parents attended series based classes 	<ul style="list-style-type: none"> ▪ Early Learning and kindergarten teachers are better aligned ▪ Children begin kindergarten better prepared ▪ Families are connected to their local school ▪ Greater respect of the early learning profession 	<ul style="list-style-type: none"> ▪ Continued planning & implementation for 2016-17 events ▪ Polk bringing together partners to focus on kinder readiness across school districts in Polk Co. ▪ Create a system for sustainability

Child Care Networks

- QRIS supports and technical assistance
- Training and professional development



Funds Support	Success Measure	Notable Highlights	Outcomes	Next Steps
<ul style="list-style-type: none">▪ Quality Improvement Specialists staff (CCR&R and Hub)▪ Professional development and supports for child care providers	<ul style="list-style-type: none"> An increase # of 3, 4, and 5 QRIS Providers serving children An increase in percentage of children who receive a developmental screen before age 3. Increase in percentage of children in ERDC in a 3, 4, or 5 star QRIS	<ul style="list-style-type: none">▪ Network growth: 17 participated in July 2014 to 68 providers participating today▪ Spanish and English▪ More than 15 portfolios have been submitted; at least five rated 3 star or higher▪ 100% growth in star rated providers:<ul style="list-style-type: none">▪ May '15 to May '16<ul style="list-style-type: none">▪ Polk 5 to 10▪ Marion 15 to 33	<ul style="list-style-type: none">▪ Continued professionalization of the child care profession▪ Peer-to-peer mentoring and support▪ Increased quality environments	<ul style="list-style-type: none">▪ Continue to build high quality QRIS programs▪ Provide professional development and educational opportunities, emphasis on meeting Hispanic provider needs

Preschool Promise

- Funding for high quality preschool up to 200% of the poverty level
- 900 Hours of instruction
- Workforce development
- Pay equity



Funds Support

- Per child/enrollment costs; Preschool Promise Coordinator; literacy supports; and inclusive care consultation



Success Measures

Increase in the number of children from Early Head Start, HS, OPK, Relief Nurseries, Healthy Families Oregon, and other waiting lists served by a Hub Program



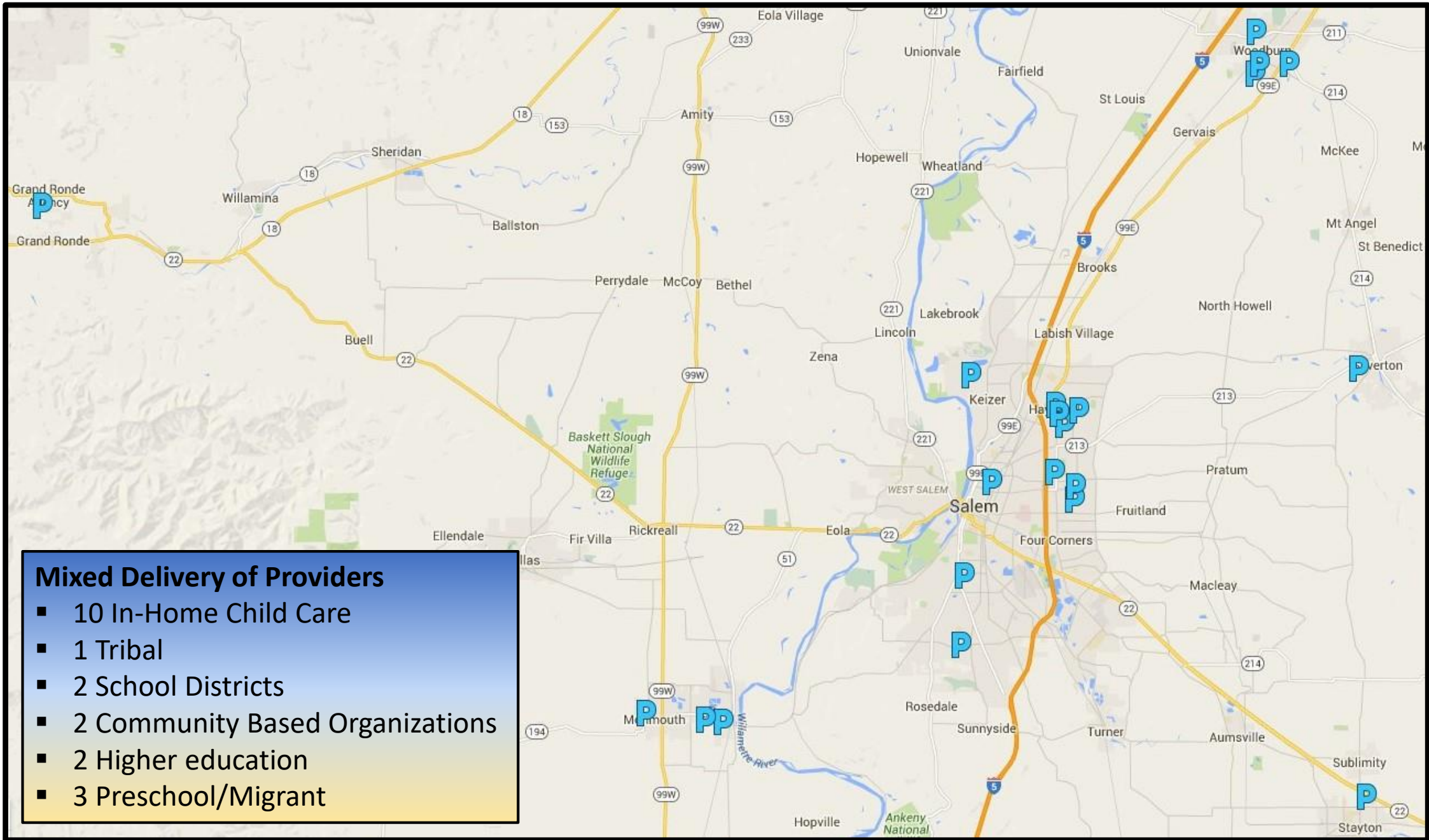
Increase in kindergarten assessment scores in each domain by demographic group

Notable Highlights

- Providers are geographically and ethnically diverse
- Development of educational opportunities for providers
- Pre-Application process for all providers

Next Steps

- Finalize contract with state
- Contract with providers
- Hire PP Coordinator
- Recruit and enroll children into programs
- Leverage existing preschool resources
- Support provider waiver preparation and submission to ELD
- Plan implementation with Preschool Promise providers
- Launch September 2016




- Mixed Delivery of Providers**
- 10 In-Home Child Care
 - 1 Tribal
 - 2 School Districts
 - 2 Community Based Organizations
 - 2 Higher education
 - 3 Preschool/Migrant

Parent Education (Marion County OPEC Hub)

- Build capacity for parent education in community
- Normalize parent education




Funds Support	Success Measure	Notable Highlights	Outcomes	Next Steps
<ul style="list-style-type: none">▪ Overall parenting hub coordination▪ Building capacity through training of trainers in the parent education series▪ Curriculum purchase▪ Mini grants to support parent education series	 <p>An increase number of children from Early Head Start, HS, OPK, Relief Nurseries, Healthy Families Oregon, and other waiting lists served by a Hub Program</p>	<ul style="list-style-type: none">▪ 66 trained facilitators in three different evidence based curriculums<ul style="list-style-type: none">▪30 facilitators trained in English▪21 facilitators trained in Spanish▪15 facilitators trained bilingually▪ 24 parent education opportunities▪ 16 supported mini grants▪ 150 parents educated in English▪ 241 parents educated in Spanish	<ul style="list-style-type: none">▪ Coordination and capacity building among programs▪ Network of parent educators▪ Parent education is more a part of the school community experience	<ul style="list-style-type: none">▪ Build a community of parent educators to support normalizing parent education▪ Enhance skills of parent educators▪ Connect the wide variety of parent education opportunities and organizations

Family Support

- Funds support emergent family needs (i.e. housing, transportation, safety, health, and education)
- Funds are administered locally in catchment areas



Funds Support	Success Measure	Notable Highlights	Outcomes	Next Steps
<ul style="list-style-type: none">▪ Purchases of emergent family needs	 <p>An increase number of children from Early Head Start, HS, OPK, Relief Nurseries, Healthy Families Oregon, and other waiting lists served Hub Program</p>	<ul style="list-style-type: none">▪ March 2015- March 2016: 344 families accessed these funds<ul style="list-style-type: none">•Housing: 42% of requests•Health: 17%•Transportation: 13%▪ Modified and simplified the process for family support	<ul style="list-style-type: none">▪ Leveraged community funds to support individual emergent needs▪ Between Jan. 2016 and May 2016, \$14,234.45 of Family Support funds were spent▪ Partners leveraged an additional \$14,215.71	<ul style="list-style-type: none">▪ Review with community partners and RIT to ensure the best use of the funds.

Ages and Stages Questionnaire (ASQ)

- Send early learning ASQ information to health care providers
- Training and support of effective administering of ASQ



Funds Support

- Funds support incentives to early learning providers, coordination, ASQ, training and materials to early learning providers



Success Measure

An increase in percentage of children who receive a Developmental Screen before age 3

An increase in the percentage of children on OHP who make it to 6 or more well-child visits by 15 months of age

Notable Highlights

- Mar. 2015- Jan. 2016- 1,308 screening results were entered by early learning providers
- Trained and provided materials to child care providers
- Assisted in translation of training and delivered training for OHA

Outcomes

- Increased awareness and training in assessment administration
- Metric movement - Increased from 34.4% in 2014 to 48% in 2015

Next Steps

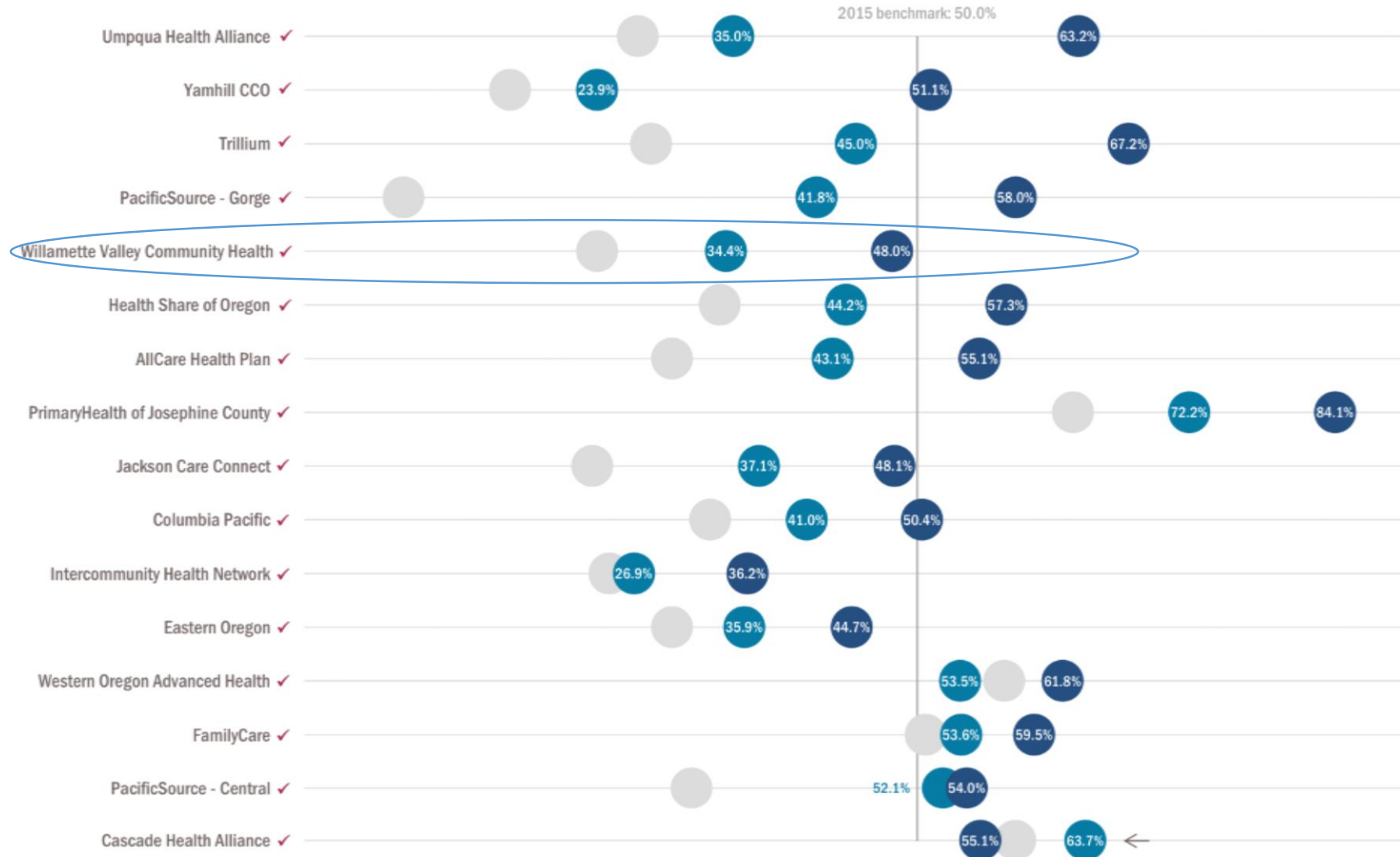
- Child care facilities will begin to complete the ASQ
- Focus on cross system communication with ASQ information



DEVELOPMENTAL SCREENING IN THE FIRST 36 MONTHS OF LIFE

All 16 CCOs achieved benchmark or improvement target for developmental screening between 2014 & 2015.

✓ indicates CCO met benchmark or improvement target / Grey dots represent 2013



What's Next?

- Sustained work on all initiatives
- Continued development of RIT role and processes
- Successful launch of Preschool Promise
- Continued work on Workforce Development; tie with Willamette Regional Achievement Collaborative
- Vroom!
- Community Messaging